

## Art Walk and Open-Air Gallery Along the Ron Filepp Trail

Saturday, September 28, 2019

1:00–4:00 PM

### Roosevelt Woodland Trail

*Hosted by Heidi Monteleone*

Back by popular demand! Enjoy a crisp early fall afternoon walk down a winding trail along a brook. Take in the sights and sounds of nature, and view paintings, sculptures, and photographs installed by local artists. Listen to live music, observe artists sketching *en plein air*, and locate the six artist-decorated Adirondack-style chairs along the way.

## Benjamin Brown: In Pursuit of the Cooperative Dream

*Hosted by Ben Johnson*

Saturday, October 26

7:00–10:00 PM

### Roosevelt Public School

A reading by local residents of a scripted documentary explores the question of who Benjamin Brown was, supplemented by projected visuals and audio clips, followed by a Q&A.

## The Glory of Russian and German Song

Saturday, November 2

8:00 PM

### Borough Hall

*Cheri Rose Katz, Mezzo-Soprano and Alan Mallach, Piano*

Opera star and Roosevelt native Cheri Rose Katz joins with pianist Alan Mallach to present a concert of some of the greatest works of Russian and German song, featuring Wagner's lyrical *Wesendonck Lieder* and Mussorgsky's gripping cycle, *Songs and Dances of Death*.

## \$100-or-Less Art and Craft Sale

Saturday, December 7

Noon to 4:00 PM

### Roosevelt Public School

*Hosted by Deirdre Sheean*

Find the perfect holiday gifts from among the variety of one-of-a-kind arts and crafts created by local and area artisans—all for \$100 or less. Plus food, drinks, and music. *Sale commissions and admission are shared equally between RAP and the Roosevelt Public School Education Foundation.*

## Tin Pan Handlers

Saturday, January 25, 2020

8:00 PM

### Borough Hall

*Hosted by Pat Monteleone*

Tin Pan Handlers will perform their eclectic mix of old-time roots music that includes early jazz-pop standards, folk songs, and the blues. Singer/ukulele player Pat Monteleone leads the band with an uncommon list of tunes that is sure to surprise and delight.

## A Novel Idea

Saturday, February 8

8:00 PM

### Borough Hall

*Hosted by Jim Sherry*

Steve Kahofer and Judith McNally will share their experiences of taking their “novel ideas” from conception to actual publication. Afterwards they will read selections from the finished products.

## One-Act Plays

Saturday, March 28

8:00 PM

### Borough Hall

*Hosted by Ron Kostar*

We went looking for one-act plays that are rich in humanity and speak to the times, and we found some. We'll be reading them on this (hopefully) dark and windy night in March.



## Roosevelt Poets

Saturday, April 25

8:00 PM

### Borough Hall

*Hosted by David Herrstrom*

Come join the Roosevelt Poets as they once again raise all hell with the alphabet.

## The Roosevelt String Band

Saturday, May 9

8:00 PM

### Borough Hall

*Hosted by David Brahinsky*

The Roosevelt String Band presents the Canadian greats: Gordon Lightfoot, Joni Mitchell, Leonard Cohen, Stan Rogers, and Buffy St. Marie.

## Mind and Body: Art and Science

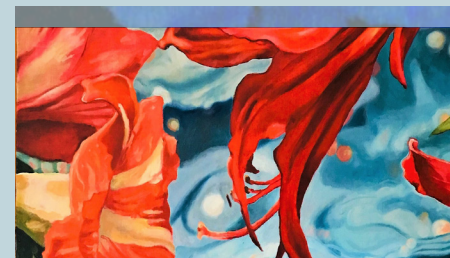
Saturday, June 6

1:00–6:00 PM

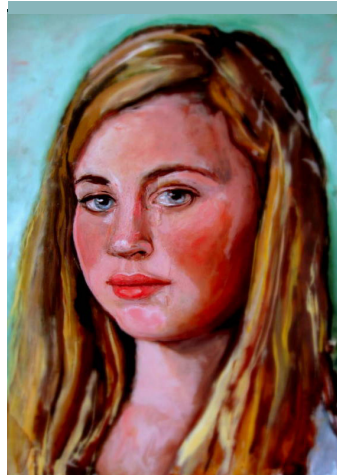
### Assifa Space, 40 Tamara Dr.

*Hosted by Sheila Linz*

Come learn about bridging the gap between art and science. Artists and poets will present their work and Rutgers researchers will explain their most recent scientific endeavors relevant to this dichotomy. Be prepared to be inspired!



Roosevelt Arts Project  
PO Box 5  
Roosevelt, NJ 08555



## 2019–2020 Calendar of Events

**The Roosevelt Arts Project (RAP)** is a multi-media arts organization dedicated to annually presenting a wide range of cultural events from Roosevelt artists. Our mission includes fostering collaboration between these artists and bringing their work to the Roosevelt and greater area public. Voluntary contributions of \$5 per adult are suggested for most RAP events, with \$10 per adult, \$5 for seniors and children for the String Band concert.

Visit us at [www.rooseveltartsproject.org](http://www.rooseveltartsproject.org)

### DIRECTIONS

Roosevelt is on Rte. 571, about 5 miles east and south of Hightstown. Upon entering town going south on Rte. 571 (Rochdale Ave.), Borough Hall is the first building on the left. To go to the Assifa Space, continue through town on Rochdale Avenue and make a right turn onto Tamara Drive (#40). To go to the school, make the first right turn as you enter town and then the next left (School Lane) and follow it straight to the school.

Non-Profit Org.  
US Postage  
PAID  
Freehold, NJ 07728  
Postal Permit No. 9